



QUOTE

QUO311

A DIFFERENT ACCOMPANIMENT, AT YOUR SERVICE



All rights reserved® KALSTEIN France S. A.
S.,
5 rue de Castiglione • 75001 Paris •
+33 1 70 39 26 50 / +33 6 11 37 13 51 •
<https://kalstein.iq>
KALSTEIN FRANCE, S. A. S



Messrs:
Edithson Maestracci

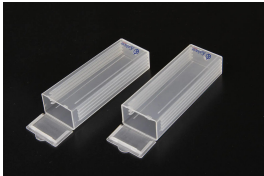
Attention:
Edithson Maestracci

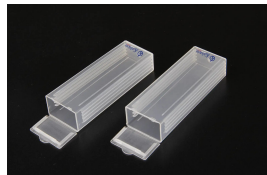
Item	Model	Image	Description	Qty	Unit	Unit value	Total value
------	-------	-------	-------------	-----	------	------------	-------------

Warning: Trying to access array offset on value of type null in
/home/kalsteiniq/public_html/platform/wp-content/plugins/kalsteinPerfiles/kalsteinCotizacion/classes/te
on line **3886**

Warning: Trying to access array offset on value of type null in
/home/kalsteiniq/public_html/platform/wp-content/plugins/kalsteinPerfiles/kalsteinCotizacion/classes/te
on line **3887**

Deprecated: str_replace(): Passing null to parameter #3 (\$subject) of type array|string is deprecated in
/home/kalsteiniq/public_html/platform/wp-content/plugins/kalsteinPerfiles/kalsteinCotizacion/classes/te
on line **3898**

1		KALSTEIN-INTERNAL Plastfodrad diaförvaringslåda YRA31	1,00	A	1.80	1.80
----------	--	--	------	---	------	------



KALSTEIN-INTERNAL
Plastfodrad
diaförvaringslåda YRA31

1,00

A

1.80

1.80

Transport Details

Type	Delivery Time	Transit Time	Description
CIF: Maritime	Depends on Kalstein model and quantities	Depends on the Country	The merchandise will arrive at the seaport, and a customs agent will contact you directly to assist you with the payment of local taxes and national transportation to your facilities from the seaport.
CIP: Air	Depends on Kalstein model and quantities	Depends on the Country	The merchandise will arrive at the airport, and a customs agent will contact you directly to assist you with the payment of local taxes and national transportation to your facilities from the airport.
DAP: Courier (DHL/Fedex)	Depends on Kalstein model and quantities	Depends on the Country	The merchandise will arrive directly at your facilities, and the DHL/Fedex courier company will contact you directly to assist you with the payment of local taxes.
DDP: Courier (DHL/Fedex)	Depends on Kalstein model and quantities	Depends on the Country	The merchandise will arrive directly at your facilities with no additional payments (in this case Kalstein has already covered the local tax payments in advance with the courier company).



CE marking: to buy with peace of mind

All Kalstein equipment complies with EU requirements in accordance with the relevant regulations.



With the acquisition of a Kalstein

You make a contribution to the Jacinto Convit Foundation, OneTreePlanted, Humatem Foundation and Maniapure Foundation.

Messrs:
Edithson Maestracci

Attention:
Edithson Maestracci

Item	Model	Image	Description	Qty	Unit	Unit value	Total value
------	-------	-------	-------------	-----	------	------------	-------------

Observations:

Delivery times:	7 - 10 days approx.	Subtotal:	1.80
Sales Representative:	Mail: sales.department@kalstein.us Phone: +33 1 7039 2650 / +33 6 1137 1351	Discount (18%):	0.32
Commercial terms:	Prepayment with purchase order. Special discount (18%), applied.	Subtotal:	1.48
Incoterm:	DDP Venezuela (Delivery Duty Paid). Air freight (courier service).	Shipment:	167.90
Transit times:	5-6 days. Transportation insurance included	Total:	169.38
Currency:	USD.		
Warranty:	1 year against manufacturing defects.		
Method of payment:	Bank Transfer.		
Origin:	Shanghai - China.		

Transport Details

Type	Delivery Time	Transit Time	Description
CIF: Maritime	Depends on Kalstein model and quantities	Depends on the Country	The merchandise will arrive at the seaport, and a customs agent will contact you directly to assist you with the payment of local taxes and national transportation to your facilities from the seaport.
CIP: Air	Depends on Kalstein model and quantities	Depends on the Country	The merchandise will arrive at the airport, and a customs agent will contact you directly to assist you with the payment of local taxes and national transportation to your facilities from the airport.
DAP: Courier (DHL/Fedex)	Depends on Kalstein model and quantities	Depends on the Country	The merchandise will arrive directly at your facilities, and the DHL/Fedex courier company will contact you directly to assist you with the payment of local taxes.
DDP: Courier (DHL/Fedex)	Depends on Kalstein model and quantities	Depends on the Country	The merchandise will arrive directly at your facilities with no additional payments (in this case Kalstein has already covered the local tax payments in advance with the courier company).


CE marking: to buy with peace of mind

All Kalstein equipment complies with EU requirements in accordance with the relevant regulations.


With the acquisition of a Kalstein

You make a contribution to the Jacinto Convit Foundation, OneTreePlanted, Humatem Foundation and Maniapure Foundation.

ACCEPTANCE OF PURCHASE ORDER

- Kalstein France SAS welcomes the purchase order, when this document faithfully expresses the commercial conditions established in the offer.
- Cash payments: For the processing and dispatch of the requested merchandise, verification of payment in bank accounts of Kalstein France is required.
- Customers with Credit: To process and dispatch the requested merchandise, verification of assigned quota and not being in default with Kalstein France is required.

TRADING CURRENCY

- Offers in foreign currency, the currency conversion calculation will be made according to the provisions of the Bank of France, set on the day of billing.
- The trading currency established for this quote is mentioned in the commercial terms of the invoice.

WARRANTY

- All equipment supplied by Kalstein France SAS is warranted to be free from defects in materials and workmanship from the date of delivery of the goods.
- The guarantee does not cover damage caused by incorrect installation or operation, defects due to transport or use other than those specified by the manufacturer.
- When the goods are being delivered, if there are damages in the box caused by the transport, the goods must not be accepted and they must be returned to the transporter or it will be solely the responsibility of the receiver. If there are damages in the goods caused by the transport, the receiver must inform directly and separately both the transporter company and the supplier within 5-7 days, after this time, there won't be a compensation possible for transport damages.
- The warranty excludes electrical or consumable parts.
- The Kalstein equipment warranty is 1 year against manufacturing defects.
- For purposes of applying the guarantee, all equipment must have a voltage protector installed.
- The guarantee of electronic or electrical components such as timers, breakers, transformers, contactors; controllers, thermostats, electronic cards, etc. It is 3 months for manufacturing defects counted from the date of the purchase invoice. The guarantee of these elements is limited because they are constantly prone to voltage variations.
- The guarantee does not include labor costs, refrigerant, transportation expenses, travel expenses or lost profits.
- This guarantee is limited solely and exclusively to carrying out, at the discretion of Kalstein France SAS, the repair or replacement of the part or element that has been found to be defective at the time of delivery or dispatch by Kalstein France SAS. at no cost to the buyer and that is covered by a bill of sale.

DELIVERY TIMES

- The delivery times indicated in this quote are estimates subject to variables.

CANCELLATIONS AND REFUNDS WITHOUT JUST CAUSE

- Merchandise in inventory, will have a penalty equivalent to 20% of the value of the purchase order.
- Import Merchandise, after receipt of the purchase order to satisfaction, there is a maximum of (3) days to cancel the purchase order. After this time, cancellations are not accepted and the merchandise will be invoiced as established.
- The return of the merchandise will be the responsibility of the Client, the box, packaging and all the parts that make up the equipment to be returned, must be in perfect condition without mistreatment, scratches and additional labels, the Kalstein France Technical Support and Logistics team will carry out technical report and will indicate the satisfactory receipt of the merchandise. If it is not received satisfactorily, the equipment will be billed in accordance with the provisions of the Purchase Order.

GENERAL POLICIES, TERMS AND CONDITIONS

<https://kalstein.eu/p12/Terms-and-Conditions/pages.html>

